



Performing Arts  
Division -  
Technical Support  
Unit

**Tsuen Wan Town Hall**

72 Tai Ho Road  
Tsuen Wan,  
NT, HK  
Phone  
852-2414 0144  
Fax  
852-2414 8903

**CONTACTS**

**Sharon CHOW**  
Senior Manager (NTS)  
Venue  
Direct Line  
852-2408 0660

**Hilda KWAN**  
Manager (TWTH)  
Operations  
Direct Line  
852-2492 2678  
Email  
hwnkwana@lcsd.gov.hk

**Eric CHAN**  
Resident Technical  
Manager (NTS)  
Direct Line  
852-2406 2848  
Email  
eytchan@lcsd.gov.hk

**GENERAL SET-UP**

*The Cultural Activities Hall operates on a 'bare-walls' touring policy. That is, all equipment is normally set-up and struck within the booking period. Hirers are reminded to allow sufficient preparation time to hang theatre masking, rig all overhead stage lighting and set up sound system.*

**Tsuen Wan Town Hall - Cultural Activities Hall**  
**FULL Technical Information**

V. 2024.02.08

Page 1 of 5



The Cultural Activities Hall is a proscenium type fit-up theatre modestly equipped to stage Drama, Entertainments, Seminar and small-scale Recital activities.

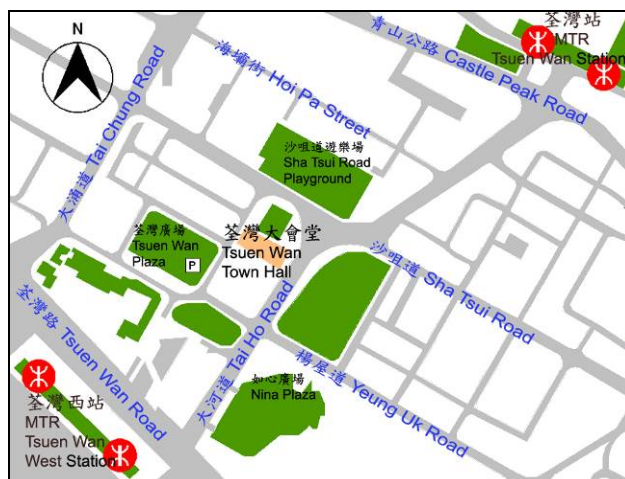
**DIRECTIONS**

**MTR:**  
Tsuen Wan Line - Tsuen Wan Station, Exit A1

Tuen Ma Line - Tsuen Wan West Station, Exit A2 or E2

**Driving Route - From S to N:**  
Route 3 via West Kowloon Highway > Route 5 exit 4B (Airport Express Station / Tsing Yi (N) / Tsuen Wan > Exit 11A (Tsuen Wan (E)) > Tsing Tsuen Road > Tsuen Kam Interchange 2<sup>nd</sup> exit > Tai Ho Road N > Sha Tsui Road > Yuen Tun Circuit

**Driving Route - From N to S:**  
Route 9 Exit 25 (Shek Kong / Tsing Yi / Kowloon) > Tsuen Kam Interchange 5<sup>th</sup> exit > Tai Ho Road N > Sha Tsui Road > Yuen Tun Circuit



**LOADING**

Foyer Passenger lift  
Lift door:  
0.91 x 1.83m (W x H)  
Inside lift:  
1.97 x 1.52 x 2.14m  
(L x W x H)

**PARKING**

Permit required



**CULTURAL ACTIVITIES HALL**



**Total Seating: 260**

- 49 on flat floor  
 (including 4 wheelchair seats)

- 211 on retractable seating platform

**PROSCENIUM**

Proscenium opening by drapes 8.5 x 3.13m (W x H)

**STAGE WIDTH**

Stage Left to Stage Right 8.50m  
 Centre Line to SR end of platform 4.25m  
 Centre Line to SL end of platform 4.25m

**STAGE DEPTH**

Depth of platform 5.00m  
 Curtain line to back wall 5.70m

**STAGE HEIGHT**

Masonry floor to false ceiling 4.24m  
 Masonry floor to clearance under bar 4.02m  
 Stage platform to clearance under bar 3.24m  
 Stage platform 0.78m

**STAGE FLOOR**

Hardboard in black colour

**RIGGING**

**House Curtain** (Red) electric motor for travel Variable Speed

**Rigging System**

Winch Bar 1  
 Overhead fix bar 6  
 Face light fix bar 2  
 Side fix bar 2  
 Capacity 250kg SWL  
 Bar length 7.90m to 13.90m  
 Lighting bars and side bars are with fix light sockets 7



**STAGE EQUIPMENT**

**Stage Drapery**

Black masking:	Leg	3 pairs	flat	4.00 x 4.20m	(W x H)
		4 pairs	flat	2.00 x 4.20m	(W x H)
Front Projection Screen		1	Electric driven	6.00 x 3.00m fixed installation	
Acoustic shell		1	set	Wenger Travelmaster 8.50 x 2.10 x 2.76m (W x D x H)	

**Stage Platform**

Modular stage platform units (Hardboard top)					
Size				8.50 x 5.00 x 0.78m (W x D x H)	

*If a flat floor is required, stage units must be trucked and re-set within the booking period*

<b>Choir Riser (3 steps)</b>	3	Wenger Tourmaster (for approx. 36 persons)
------------------------------	---	--

<b>Musician Chair</b>	30
-----------------------	----

<b>Music Stand</b>	15
--------------------	----

<b>Dancing Tile</b> <i>for dance show only</i>	3	8.53 x 2.00m (L x W) (Black) <u>(Please allow time to lay the tiles during booking time)</u>
---	---	---

**Music Instrument**

6ft Baby Grand Piano	1	Yamaha C5
18" Chinese Timpani	1	

**Lift and Ladder**

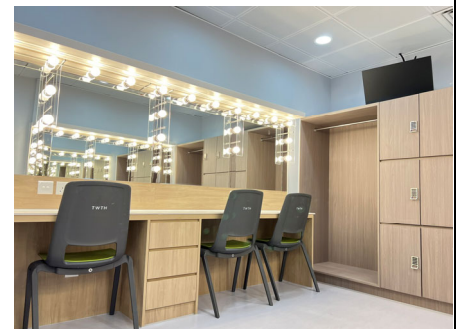
Aerial Lift	1	Genie AWP 20SDC, 8.12m (Max.) <b><i>Operated by competent person &amp; prior approved by venue management only</i></b>
-------------	---	---

**DRESSING ROOM**

Stage Left

- C1 For 6 - 8 persons
- C2 For 6 - 8 persons

*All dressing rooms fitted without private toilet and shower.  
Steamer can be loaned from Resident Stage Management.*



**LIGHTING**

<b>Dimmer</b>	ETC Sensor3 dimming system. A total of 60 dimmers of 3kW.
<b>Control Board</b>	ETC - Ion, with full backup control facilities, controllable of maximum 1,024 parameters, located in Lighting Control Room at rear of auditorium.
<b>House light</b>	Dimmer controlled. Take-control available in Lighting Control Room.
<b>Circuit</b>	60 x 3kW production lighting circuits, fixed wiring type, distributed at various locations throughout the lighting bars. All channels are terminated to 15A socket outlets to British Standard.



<b>Additional Power</b>	32A x 3 phases at Up Stage Right rear wall for temporary use. <b>Connection must be conducted by a local registered electrical worker.</b>				
	<b>Hirer shall supply adequate circuit protective devices for all bring in electrical installation.</b>				
	<b>13A wall-mounted socket outlets at UK standard are provided on the stage.</b>				
<b>Front Of House Lighting Position</b>	FOH fixed Lighting Bar no.1, 5.36m throw at 9 degree				
<b>Profile</b>	600W	Strand	SL 23/50°	22	Face Lx
	750W	ETC	Source 4 zoom 25/50 °	2	
<b>LED Beam Wash</b>	280W	Chauvet	Rogue R1 Beam Wash	24	Top & Face Lx
<b>LED Batten</b>	200W	Altman	Spectra CYC 200 RGBA	7	Top Lx
<b>Smoke generator</b>		Look Solutions	Viper NT (DMX controllable)	2	
<b>Strobe Light</b>		Optikinetics	Super Slave Strobe	1	
<b>UV light</b>	400W	Griven	WOOD 400	2	
<b>Other</b>	LED Music stand light			10	
	Portable screen		70" x 70"	1	
	Iris and Gobo Holder		Available as requested		

**Supply of above equipment subject to availability on receipt of a lighting plan.**

**Equipment availability does vary slightly according to equipment conditions and maintenance. Check with Resident Technical Manager for any updates.**

**If technical preparation time is less than 2 hours in the booking period, hirer will be provided with basic lighting from available hung equipment only.**

**All brought-in "Electrical and Stage Lighting Equipment" to be used in LCSD PA venues, shall meet the requirements of "Code of Practice for Electricity (Wiring) Regulations (2020 Edition)". Please contact the venue management for any electrical safety concern. Website reference:**

[https://www.emsd.gov.hk/en/electricity\\_safety/index.html](https://www.emsd.gov.hk/en/electricity_safety/index.html)

**SOUND**

<b>Sound System</b>	d&b audiotechnik Yi7P (L-C-R and delay fill)	5
	d&b audiotechnik Vi-GSUB	2
	d&b audiotechnik 8S	16
	d&b audiotechnik 44S (Front-fill)	4
<b>Main Control Console</b>	Soundcraft Vi 1000 digital mixing console:	
	Mono inputs	32
	Group outputs	8
	Auxiliary outputs	8
	Matrix outputs	8
	Stereo outputs	1
<b>Microphone tie line</b>	Rear of the stage	36
	Rear of the auditorium	12



<b>Microphone</b>	Neumann KM184	2
	Neumann KM185	2
	AKG C414	2
	Crown PCC160	2
	Shure Beta 57A	4
	Shure SM58	4
<b>Wireless Microphone</b>	Sennheiser EM300-500 G4 UHF Wireless Microphone System	4 Sets
	Bodypack: Sennheiser SK500 G4	4
	Handheld: Sennheiser SKM 500 G4	4
	<b>Max. 4 units with a minimum booking of 1 session (Incur extra charge)</b>	
<b>Stage Monitor</b>	d&b audiotechnik M6	4
<b>CD Player</b>	Denon DN-635	2
<b>CD Recorder</b>	Tascam CD-RW901 MKII	2
<b>LCD Projector</b>	Panasonic PT-MZ770 (8,000 Lumen)	1 (fixed mounted on Lx bar 2) (Extra charge required)
<b>Video Streaming System</b>		
Camera	Panasonic AW-UE150W	4
Remote Camera Controller	Panasonic AW-RP150	1
Video Switcher	BMD ATEM 4 M/E Broadcast Studio 4K	1
	BMD ATEM 1 M/E Advanced Panel	1
HDD Recorder	BMD HyperDeck Studio 12G	7
SD Card Recorder	BMD Duplicator 4K	2

### **COMMUNICATION**

Single-channel Intercom system for stage, lighting and sound  
Production desk can be set at the middle of the stalls upon request

**Prior to booking date, please confirm with Resident Technical Manager for the availability of the equipment.**

**All required equipment will be set-up during the booking sessions; please allow adequate time for equipment set-up before performance or rehearsal**