



Performing Arts  
Division –  
Technical Support  
Unit

**Sheung Wan Civic Centre**

5/F, Sheung Wan  
Municipal Services  
Building,  
345 Queen's Road  
Central  
Sheung Wan, H.K.  
Phone  
852-2853 2668  
Fax  
852-2543 9771

**CONTACTS**

**Esther Sam**  
Senior Manager (HKW)  
Direct Line  
852- 2853 2688

**Eva Fang**  
Manager (SWCC)  
Direct Line  
852- 2853 2686  
Fax Line  
852- 2543 9771

**Sunny Wong**  
Resident Technical  
Manager (HK)  
Direct Line  
852-2853 0730 (SWCC) /  
3184 5737 (SWHCC)  
Fax Line  
852- 2850 6250

**GENERAL SET-UP**

*Theatre operates on a 'bare-walls' touring policy. That is, all equipment is normally set-up and struck within the booking period. Hires are reminded to allow sufficient preparation time to hang theatre masking, rig all overhead stage lighting and set up sound system. Check with our Technical Manager for any other equipment and technical enquiry.*

# Sheung Wan Civic Centre – Theatre

## FULL Technical Information

V. 2023.12.21

Page 1 of 7



The SWCC Theatre is a traditional proscenium theatre designed and fully equipped to stage Drama, Music and Dance. It is also used for Assembly and Variety performances.

**DIRECTIONS**

MTR:  
Island Line, Sheung Wan Station, Exit A1 or A2

Freeway (From Western Harbour Tunnel):  
Connaught Road Central → Turn right to Rumsey Street → Wing Lok Street → Turn left to Cleverly Street → Turn right to Bonham Strand → Turn left to Morrison Street

Freeway (From Western District):  
Connaught Road Central → Turn left to Cleverly Street → Turn right to Bonham Strand → Turn left to Morrison Street

Freeway (From Central):  
Connaught Road Central → Turn left to Rumsey Street → Turn right to Wing Lok Street → Turn left to Cleverly Street → Turn right to Bonham Strand → Turn left to Morrison Street



**LOADING**

Loading dock shared with the Municipal Complex

Cargo lift:  
2.80 x 1.70 x 3.00 m  
(W x D x H)  
Capacity: 2000kg

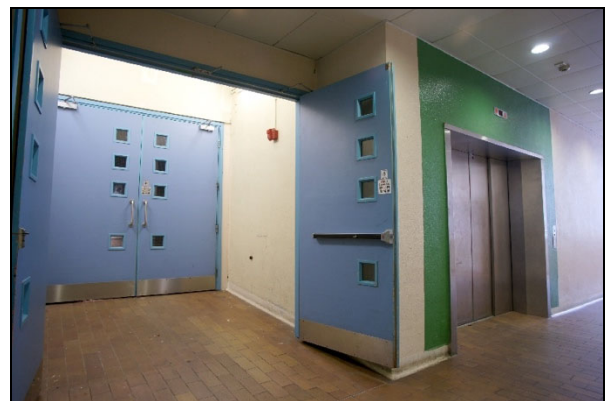
Door Opening to side stage:  
2.03 x 2.38m (W x H)

**STAGE ENTRANCE**

Next to 4/F Cargo lift or 4/F passenger lift, entry corridor turns right

**PARKING**

NIL





**AUDITORIUM**



**Total Seating:**  
482

**Removable Seating**  
Orchestra pit (seats): 16-20

35 seats will be lost from the Stall Row AA & BB for setting Orchestra pit.

**PROSCENIUM**

Frame dimension 10.05 – 4.95m (W x H)

**STAGE WIDTH**

Centreline to stage right wall	9.20m
Centreline to stage left wall	10.00m
Between fly galleries	12.50m
Centreline to stage right	6.20m
Centreline to stage left	6.30m

**STAGE DEPTH**

Rear of Proscenium to back wall	11.80m
Rear of Proscenium to forestage edge	1.75m

**STAGE HEIGHT**

Clearance under grid 11.54m

**FORESTAGE / ORCHESTRA PIT**

10.00 x 2.00 x 1.50m (W x L x D)	With a loss of 35 seats 16-20 musicians
Capacity	

**STAGE FLOOR**

Flat black surface hardboard

**SIDE STAGE**

Limited side stage area

**The stage fire shutter is treated as a safety curtain by FSD and cannot be obstructed by scenery, equipment or stage wagon in production.**

**REAR STAGE**

Not available

**STORAGE SPACE**

Limited space behind the back wall

**CROSSOVER**

Corridor behind stage and corridor in 5/F dressing room



**RIGGING**

House Curtain (Golden Yellow)	Standard speed electric or Fly in and out manually
Electric Lighting Bar (Bar no.3, 4, 11, 22, 30, 37 & 42) #	7, Fixed speed electric
Double purchase counterweights	34
Bar diameter	48 mm
Bars distance (generally)	0.20m
Capacity (generally)	250kg SWL
Bar length	11.80m

# Please be reminded that all electric lighting bar can only reach to the maximum height of 6900mm (without lighting fixtures hanged). Hirers should be aware of this limitation and reserve safety distance between lighting bar and their bring-in sceneries and/or equipment.

**Rigging System**

Bar 26 carries the mid curtain  
Bar 37 carries the cyclorama lighting bar  
Bar 39 carries the rear curtain

**STAGE EQUIPMENT**

**Stage Drapery**

Black masking	Legs	10	flat	2.00 x 6.00m	(W x H)
	Borders	4	flat	12.00 x 2.50m	
	Half tabs	2	flat	7.00 x 6.10m	Mid-curtain
	Half tabs	2	flat	7.00 x 6.10m	Rear curtain
	Half tabs	2	flat	4.00 x 6.00m	Spare
	Tab	1	flat	14.10 x 5.80m	as Border 5 on bar 31
Golden Yellow House Curtain		1	pair	General rig; fix speed electric draw, or manual fly.	

**Orchestra Riser**

Wenger portmaster. Aluminum frame platform with wooden surface. Guard rails available. No drilling or painting.

2.40 x 1.20m (W x L)	203mm(H) x 6
	407mm(H) x 6

**Choir Riser** (3 steps) Wenger tourmaster  
5 x 3 steps choir risers for approx. 60 persons.

**Acoustic Shell** Wenger legacy  
1 set of 5 Acoustic Shell Panels

**Orchestra Chair** 70

**Music Stand** 50

**Conductor's Podium** 1

**Conductor's Stand** 1

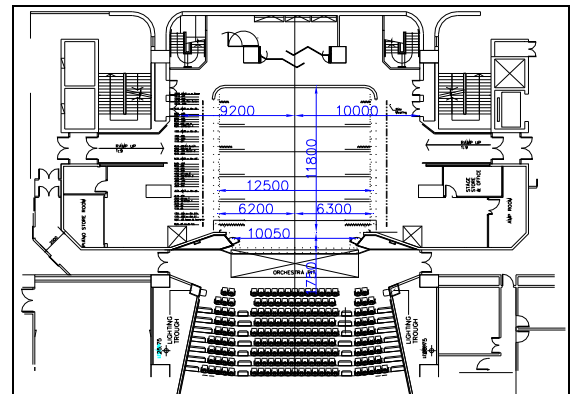
**High Stool** 4

**Ceremony Chair** 10

**Podium** 1

**Dancing Tile** Black reversible for forestage edge to Cyc  
*for dance show only*  
(Please allow time to lay the tiles during booking time)  
12.00 x 2.00m x 6

**Stage Carpet** Green 2 4.00 x 8.50m  
*for Chinese Opera and Operatic Songs concerts only*





<b>Instrument</b>	Grand Piano	1	Steinway & Sons (Incur extra charge)
	Timpani	1 set	Lugwig 23", 26", 29", 32"
	18" Chinese Drum	1	

**Lift and Ladder**

Cougar lifts (Max. 7.20m H) AP-25AC	1	<i>operated by competent person &amp; prior approved by venue management only</i>
--	---	---

**DRESSING ROOM**

Stage (Level 5) **Dressing Room 1:** for 8 people  
**Dressing Room 2:** for 5 people  
**Dressing Room 3:** for 5 people  
**Dressing Room 4:** for 2 people  
**Dressing Room 5:** for 5 people  
**Dressing Room 6:** for 2 people

*10 seats dressing table outside dressing room 4-6  
 All rooms fitted with private toilet and shower facility.  
 Quick change facilities and digital locker at rear stage*



**RUNNING WARDROBE**

1 set of steamer, 5 sets of Irons & boards are available for loan from Resident Stage Management Office

**LIGHTING**

**Dimmer** 180 nos. of 2.5kW; locating at Dimmer Room Level 4 Lecture Hall.

**Control Board** ETC Gio 2048, with full backup control facilities, EOS Family OS operating software, and located in Lighting Control Room at the back of auditorium.

**Houselight** Dimmer controlled. Take-control available in Lighting Control Room.

**Circuit** 180 nos. x 2.5kW production lighting circuits, fixed wiring type, all circuits are terminated to 2 nos. of 15A socket outlets to British standard 546 respectively on the production lighting boxes, distributed at various locations throughout the Stage and lighting bridges.

**Additional Power** 100Amp 3-phase (include 1 nos. of 63Amp 3-phase socket, 1 nos. of 32Amp 3-phase socket and 1 nos. of 32Amp single phase socket), located at Down Stage Right wall with 100 clamping busbar for temporary cable connection.  
**Connection must be conducted by a local registered electrical worker.**  
**Hirer shall supply adequate circuit protective devices for all bring in electrical installation.**  
**13A wall-mounted socket outlets at UK standard are provided on the stage.**

**Front of House Position** FOH Lighting Bridge no.1, 8.17m throw at 38 degree  
 FOH Lighting Bridge no.2, 11.24m throw at 26 degree

<b>Profile</b>	750W	ETC	Source 4 15/30	122	44 (FOH lighting bridges, total 2 bridges) 4 (Slot) 32 (Side Light Tower) 42 (Pool) (Pool)
	750W	ETC	Source 4 25/50	16	
<b>Fresnel</b>	1kW	Selecon	RAMA 7/50 (16RAFR 150)	60	50 (Stage and FOH lighting bridges) 10 (pool)



<b>Parcan 64</b>	1kW	Thomas	CP 61 / 62	22	(Pool)
<b>Cyclorama light</b>	200W	Altman	Spectra 200 RGBA	6	(Bar 37)
<b>Ground Row</b>	200W	Altman	Spectra 200 RGBA	6	
<b>Follow Spot</b>	400W	Ushio	Sai-500	2	Entrance top of the Auditorium
<b>Effects</b>	2kW	Strand	Cadenza EP	1	
<b>Projection</b>			Fleecy clouds	1	
<b>Animation</b>	750W	ETC	Source 4 25/50	4 (Max 4 effects)	
<b>Projection</b>			Animation Motor		
	Effect	Disc	Water	4	
			Fire	4	
<b>Smoke generator</b>	1300W	Look Solutions	Viper NT	2	
<b>Strobe Light</b>	3kW	Martin	Atomic 3000	2	
<b>UV light</b>	400W	Griven	Wood	4	
<b>Other</b>	Music Light	RATstands	TRIO4	25	
				5 (Pool)	
	Side Light Towers		4-tier, 2.00m(H)	8	
	Floor Stands			12 (Pool)	
	Light Stands			16 (Pool)	

<b>Gobo Holder</b>	<u>Holder Qty.</u>	<u>Holder Type</u>	<u>Gobo Size</u>	<u>Image Size</u>
<b>Spotlight Applicable</b>				
ETC	20	A	100mm	68-75mm
ETC	20	B	86mm	65mm

Supply of above equipment subject to availability on receipt of a lighting plan.

Equipment availability does vary slightly according to equipment conditions and maintenance. Check with Senior Technical Officer for any updates.

Hirer will be provided with basic lighting only, from available hung equipment, if technical preparation time is less than 2 hours in the booking.

All brought-in “Electrical and Stage Lighting Equipment” to be used in LCSD PA venues, shall meet the requirements of “Code of Practice for Electricity (Wiring) Regulations (2020 Edition)”. Please contact the venue management for any electrical safety concern. Website reference:

[http://www.emsd.gov.hk/emsd/eng/welcome/em\\_safety.shtml](http://www.emsd.gov.hk/emsd/eng/welcome/em_safety.shtml)

### **SOUND**

<b>Sound System</b>	Meyer Sound Lina (centre cluster)	3	
	Meyer Sound Lina (sides of proscenium)	10	(5 on each side)
	Meyer Sound 750-LFC	4	(2 on each side)
	Meyer Sound UPM-1XP (stage front)	3	
	Meyer Sound Lina (top of auditorium)	3	
	Meyer Sound UP4-XP (auditorium)	10	
<b>Main Control Console</b>	Soundcraft Vi2000 with 24 inputs and 8 outputs. Located in Sound Control Room at the back of auditorium.		
<b>Audio tie line</b>	Each side of stage	12	
	Front stage	6	
	Auditorium Row T	24	





<b>Microphone</b>	AKG CK9 with C451EB	3
	AKG C414B	4
	AKG D112	2
	AKG C547BL	4
	AKG C568 shotgun	2
	Crown PCC 160	3
	DPA 4018V	4
	DPA d:vote 4099	4
	DPA 2011C	4
	Neumann KM183	2
	Neumann KM184	9
	Shure 565SD	4
	Shure Beta 57A	4
	Shure Beta 58	2
	Shure Beta 58A	8
	Shure SM 57	6
	Shure SM 58	4
	Shure MX 412	2
Shure PG58	1	
<b>Wireless Microphone</b>	Shure ADX2/K9 hand-held type	8
	Shure ADX1-Lemo 3 body-pack type with Shure TL47T/O-LEMO-A	8
	<b>Max. 8 units with a minimum booking of 2 sessions (Incur extra charge)</b>	
<b>Stage Monitor</b>	Meyer Sound UPJ-1P	8
	Meyer Sound UPM-2P	4
<b>CD Player</b>	Denon DN-C635	2
<b>LCD Projector and Lens</b>	Panasonic PT-RZ970	1
	Lens ET-DLE350	1
<b>LED SURTITLE DISPLAY SYSTEM</b>	Horizontal LED Display Boards (Incur extra charge)	2 sets
	Default font color : White	
	Two (2) Horizontal display boards fixedly installed on the left and right sides of the forestage.	
	Display English, Chinese or English and Chinese texts simultaneously.	
	Size of LED board : 153.6 x 57.6 x 7.5cm (WxHxD)	
	The system will display in four lines per page.	
	Surtitle input and stored in Microsoft® Word (*.doc or .docx) file format.	
	The control monitor can be set at side stage right. Display on ALL boards will be identical.	
	LED board is set up within booking period when two sessions or more are booked. Setup time normally requires one hour.	



**COMMUNICATION**

Stage manager desk located at stage left

Two channels intercom system for stage, lighting and sound (4 sets portable pack)

Paging and show relay system

Close Circuit TV system (2 floating monitors for hirers)

Production desk can be set at the top of the auditorium upon request

**Prior to booking date, please confirm with Technical Manager for the availability of the equipment.  
All required equipment will be set-up during the booking sessions; please allow adequate time for equipment set-up before performance or rehearsal.**