



Performing Arts  
Division -  
Technical Support  
Unit

**North District Town Hall**  
2 Lung Wan Street,  
Sheung Shui,  
NT, HK

Phone  
852-2671 4400

Fax  
852-2668 5206

**CONTACTS**

**Winnie POON**  
Senior Manager (NTE)  
Venue  
Direct Line  
852-2694 2505

**Emily ZHAO**  
Manager (NTE)  
Operations 2  
[mnteop2@lcsd.gov.hk](mailto:mnteop2@lcsd.gov.hk)  
Direct Line  
852-2694 2590

**Dennes KWAN**  
Resident Technical  
Manager (NTE)  
[dyykwan@lcsd.gov.hk](mailto:dyykwan@lcsd.gov.hk)  
Direct Line  
852-2694 2571

**GENERAL SET-UP**

*The Auditorium operates on a 'bare-walls' touring policy. That is, all equipment is normally set-up and struck within the booking period. Hirers are reminded to allow sufficient preparation time to hang theatre masking, rig all overhead stage lighting and setup sound system. Check with our Resident Technical Manager for any other equipment and technical enquiry.*

**North District Town Hall - Auditorium**  
**FULL Technical Information**

V. 2023.11.28

Page 1 of 5

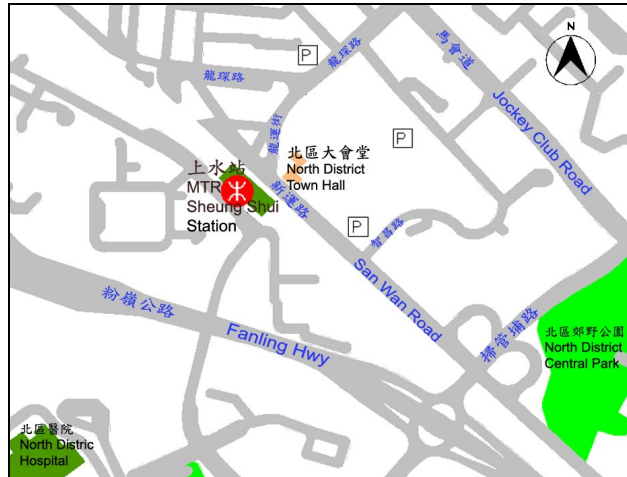


The North District Town Hall Auditorium is a traditional proscenium theatre designed and fully equipped to stage major Drama, Variety Performances and Seminar.

**DIRECTIONS**

MTR:  
East Rail Line, Sheung Shui Station

Driving Route:  
Fanling Highway → So Kwun Po Road → Jockey Club Road → Lung Sum Avenue → Lung Wan Street



**LOADING**

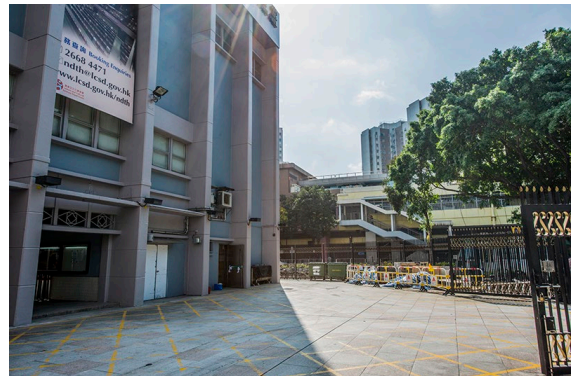
Passenger Lift:  
Door: 0.8 x 2.00 m (W x H)  
Inside: 1.08 x 1.12 x 2.25 m  
(W x D x H)

**STAGE ENTRANCE**

Stairs from Ground Level and Podium Level.  
Lift from Ground Level and Podium Level.

**PARKING**

Permit required





**AUDITORIUM**



**Total Seating: 456**  
Stalls: 216  
Balcony: 240

**PROSCENIUM**

Structural Opening

10.37 x 3.78 m (W x H)

**STAGE WIDTH**

Downstage at proscenium  
Centreline to downstage right wall  
Centreline to downstage left wall  
Upstage at Cyclorama  
Centreline to upstage right wall  
Centreline to upstage left wall

10.37 m  
6.66 m  
6.66 m  
7.44 m  
5.45 m  
5.45 m

**STAGE DEPTH**

Rear of Proscenium to clear under gallery  
Rear of Proscenium to stage edge on CL

6.75 m  
1.60 m

**STAGE HEIGHT**

Clearance under grid

6.50 m

**ORCHESTRA PIT**

Not available

**STAGE FLOOR**

Surface flat hardboard

**SIDE STAGE**

Not available

**REAR STAGE**

Not available

**STORAGE AREA**

Not available

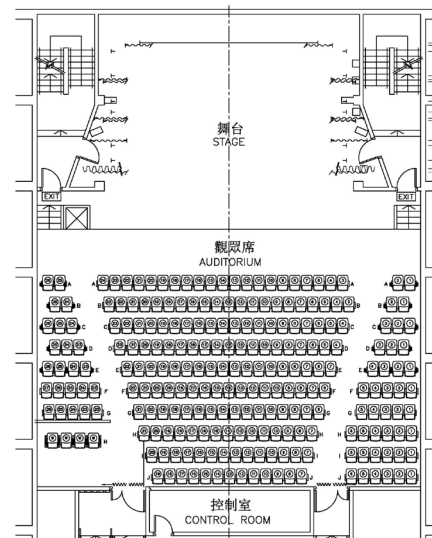
**CROSSOVER**

Corridor at dressing room level

**RIGGING**

Rigging System

Not available





**STAGE EQUIPMENT**

**Stage Drapery**

|                            |              |         |               |                |         |
|----------------------------|--------------|---------|---------------|----------------|---------|
| Black masking              | Legs (pairs) | 2       | flat          | 2.0 x 5.00 m   | (W x H) |
|                            |              | 1       | flat          | 1.6 x 4.25 m   |         |
|                            | Borders (US) | 1       | flat          | 10.5 x 1.40 m  |         |
|                            | Borders (DS) | 1       | flat          | 9.0 x 1.60 m   |         |
| Red house curtain (manual) |              | 1       | 100% fullness | 11.00 x 4.85 m |         |
| Red border                 |              | 1       | 100% fullness | 13.00 x 1.30 m |         |
| Split black drop (manual)  |              | 1 Pairs | flat          | 5.50 x 5.60 m  |         |
| Cyclorama                  |              | 1       |               | 8.20 x 5.10 m  |         |

**Bar diameter** 48mm Length: 9.4m

**Orchestra Riser** Wenger Trouper  
Aluminum frame platform. No drilling or painting.  
2.44 x 1.22m (W x L) 407mm (H) x 2

**Conductor's Podium** 1

**Choir Riser (3 tiers)** 3

**Musician Chair** 30

**Music Stand** 25

**Stool** 3

**Podium** 1 0.64 x 0.56 x 1.19-1.40m adj. (W x D x H)

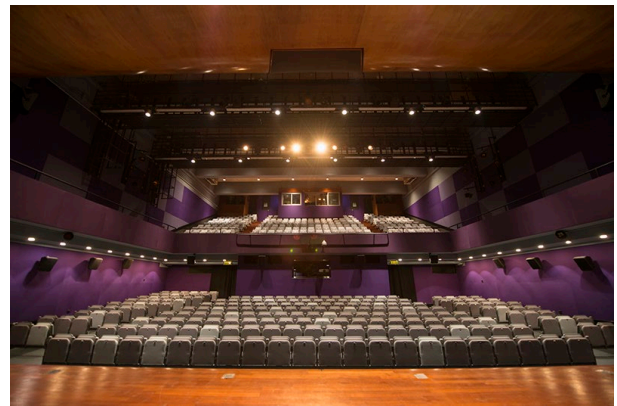
**Dancing Tile** 4 10.5 x 2.00m (W x D)  
*for dance show only* Black for main stage

*(Please allow time to lay the tiles during booking time)*

**Stage Carpet** Red 2 9.20 x 2.10 m (W x D)

**Instrument** Upright piano 1 Yamaha U5  
Chinese drum 1

**Table** 2 1.38 x 0.77 x 0.73 m (W x D x H)  
Table cover 2 Magenta



**DRESSING ROOM**

Level 1 Nos. 2: each accommodate 4 persons





**LIGHTING**

|                                |  |                |                       |             |                                      |
|--------------------------------|--|----------------|-----------------------|-------------|--------------------------------------|
| <b>Dimmer</b>                  | 52 modules: ETC Sensor3, 52 nos. of 2kW.   |                |                       |             |                                      |
| <b>Control Board</b>           | ETC ION Xe 2000 Lighting Console, with full backup control facilities, controllable of maximum 1024 parameters, located in Lighting Control Room.  |                |                       |             |                                      |
| <b>Houselight</b>              | Dimmer controlled in Lighting Control Room.  |                |                       |             |                                      |
| <b>Circuit</b>                 | 52 nos. 2kW channels fixed wiring type, distributed at front of house, backstage & over stage. All 2kW channels are terminated to 15A socket outlets to British standard.  |                |                       |             |                                      |
| <b>Additional power</b>        | 63A x 3 phase at Side Stage Left for temporary use.<br><b>Connection must be conducted by a local registered electrical worker.</b><br><b>Hirer shall supply adequate circuit protective devices for all bring in electrical installation.</b><br><b>13A wall-mounted socket outlets at UK standard are provided on the stage.</b> |                |                       |             |                                      |
| <b>Front of House Position</b> | FOH Lighting Bridge no.1, 8.07 m throw at 48 degree<br>FOH Lighting Bridge no.2, 10.17 m throw at 36 degree<br>FOH Lighting Bridge no.2, 11.63 m throw at 31 degree  |                |                       |             |                                      |
| <b>Profile</b>                 | 750W   | ETC            | Source 4 LED series 3 | 30          |                                      |
|                                |  |                | 15/30°                |             |                                      |
|                                | 750W   | ETC            | Source 4              | 15/30°      | 10                                   |
|                                | 750W   | ETC            | Source 4              | 25/50°      | 4                                    |
|                                | 750W   | ETC            | Source 4              | 36°         | 10                                   |
| <b>LED Fresnel</b>             | 130W   | Altman         | Pegasus6              | 40          |                                      |
|                                | Brandoors are available for all Fresnel spotlight available for use  |                |                       |             |                                      |
| <b>LED PAR</b>                 | 90W  | ETC            | ColorSource PAR       | 12          |                                      |
| <b>LED Automated Lighting</b>  | 600W   | Robe           | Spiider               | 4           | Fixed Installation at Lighting Slots |
| <b>LED Batten</b>              | 200W   | Altman         | Spectra CYC 200 RGBA  | 8           | On O/H Lx bar                        |
| <b>Follow Spot</b>             | 1.8kW  | Robert Juliat  | Victor - 1159B        | 2           |                                      |
| <b>Gobo Holder</b>             | Size A   | ETC            | Source 4              | 15/30 & 36° | 10                                   |
|                                | Size B   | ETC            | Source 4              | 15/30 & 36° | 10                                   |
| <b>Iris</b>                    |  | ETC            | Source 4              | 15/30 & 36° | 10                                   |
| <b>Smoke Generator</b>         |  | Look Solutions | Viper NT              | 1           | Via DMX Control                      |
| <b>Strobe Light</b>            |  | Martin         | Atomic 3000 DMX       | 1           | Via DMX Control                      |
| <b>UV light</b>                |  | Wildfire       | WF-402F, 90° flood    | 1           |                                      |
| <b>Others</b>                  | Music light  |                |                       | 15          |                                      |
|                                | Floor stand  |                |                       | 8           |                                      |

Supply of above equipment subject to availability on receipt of a lighting plan.

Equipment availability does vary slightly according to equipment conditions and maintenance. Check with Resident Technical Manager for any updates.

**Hirer will be provided with basic lighting only, from available hung equipment, if technical preparation time is less than 2 hours in the booking.**

All brought-in “Electrical and Stage Lighting Equipment” to be used in LCSD PA venues, shall meet the requirements of “Code of Practice for Electricity (Wiring) Regulations (2009 Edition)”. Please contact the venue management for any electrical safety concern. Website reference:

[https://www.emsd.gov.hk/en/electricity\\_safety/index.html](https://www.emsd.gov.hk/en/electricity_safety/index.html)





**SOUND**

|  |   |        |
|--|---|--------|
| <b>Sound System</b>  | d&b audiotechnik E12/E12D (Central Custer)  | 1/1    |
|  | d&b audiotechnik E12 (Left & right)   | 4      |
|  | d&b audiotechnik Q-Sub (Left & right)   | 2      |
|  | d&b audiotechnik E6 (Front Fill)  | 4      |
| <b>Main Control Console</b>                                | Soundcraft Vi1000 digital mixing console with 32 mono and 8 aux outputs in control room at rear of auditorium |        |
| <b>Microphone tie line</b>                                 | Each side of stage  | 2      |
|  | Front stage   | 4      |
| <b>Signal Processor (Pre-aligned, not loose equipment)</b> | BSS BLU-806 Digital Signal Processor  | 2      |
| <b>Microphone</b>  | AKG C414  | 2      |
|  | Crown PCC 160   | 3      |
|  | Neumann KM 184  | 6      |
|  | Shure SM 58   | 3      |
|  | Shure SM 58S  | 2      |
|  | Shure BETA 52A  | 1      |
|  | Shure BETA 57A  | 6      |
|  | Shure BETA 58   | 2      |
|  | Shure BETA 87A  | 2      |
|  | Shure MX418/C   | 2      |
| <b>Wireless Microphone</b>                                 | Sennheiser EW300-500 G4 UHF wireless mic system   | 6 sets |
|  | Bodypack: SK500G4 <b>OR</b>   | 6      |
|  | Handheld: SKM500G4  | 6      |
|  | <b>Max. 4 units with a minimum booking of 1 session (Incur extra charge)</b>                                  |        |
| <b>Stage Monitor</b>                                       | d&b audiotechnik E8 (fix hanged)  | 4      |
|  | d&b audiotechnik M6   | 6      |
| <b>CD Player</b>   | Denon DN-C635   | 2      |
| <b>CD Recorder</b>   | HHB CDR-882   | 1      |
| <b>Multimedia Projector</b>                                | Panasonic PT-RZ970B (10,000 ANSI Lumens)  | 1      |
| <b>Digital Film Projector</b>                              | Christie 2220 with Dolby digital stereo system  | 1      |

**COMMUNICATION**

Stage managers control panel at stage left  
Single-ring intercom system for stage, lighting and sound  
Paging and show relay system  
Close Circuit TV system  
Production desk can be set at the middle of the stalls

**Prior to booking date, please confirm with Resident Technical Manager for the availability of the equipment.  
All required equipment will be set-up during the booking sessions; please allow adequate time for equipment set-up before performance or rehearsal**