



Hong Kong City Hall – Concert Hall

FULL Technical Information

V. 2023.08.16

Page 1 of 9

Performing Arts
Division –
Technical Support
Unit

Hong Kong City Hall
5 Edinburgh Place,
Central, Hong Kong
Phone
852-2921 2840
Fax
852-2877 0353

CONTACTS

Veron LAM
Senior Manager (City Hall)
Direct Line
852- 2921 2888

Sophia CHAN
Manager (Hiring
Management)
Direct Line
852- 2921 2835
Fax Line
852- 2524 5898
852- 2877 0353

Sheila TSANG
Resident Technical Manager
(City Hall)
sheilatsang@lcsd.gov.hk
Direct Line
852- 2921 2802
Fax Line
852- 2537 6307

GENERAL SET-UP

The Concert Hall operates on a 'bare-walls' touring policy. That is, all equipment is normally set up and struck within the booking period. Hirers are reminded to allow sufficient preparation time to hang masking and set up all stage lighting and audio equipment. Check with our Technical Manager for any other equipment and technical enquiry.



The Concert Hall is designed primarily as a symphony hall and acoustically and in other respects best suited for performance of music. The Concert Hall is also suitable for Drama, Dance and Chinese Opera productions when the overhead sounding boards being folded and withdrawn upward to allow the use of grid and suspension bars for normal stage lighting and scenery drops.

DIRECTIONS

MTR:
Tsuen Wan Line or Island Line, Central Station, Exit K
Airport Express or Tung Chung Line, Hong Kong Station, Exit A

Freeway (From W to E):
Connaught Road Central →
Edinburgh place (turn left on
City Hall Wilson Car Park)

Freeway (From E to W):
Connaught Road Central →
Connaught Road Place (turn
right on Jardine House) →
Connaught Road Central →
Edinburgh place (turn left on
City Hall Wilson Car Park)



LOADING

Rolling gate at backstage entrance left:

2.80 x 3.05m (W x H)

Slide door to stage:

2.50 x 2.66m (W x H)

STAGE ENTRANCE

Backstage entrance

PARKING

Permit required





AUDITORIUM



Total Seating: 1,430

Front Stalls: 578
Rear Stalls: 465
Balcony: 387

Extension stage edge. Formed by removal of Seats at Row A & B which will reduce 59 seats.

Orchestra Pit. Formed by removing forestage traps Capacity of 10-15 musicians. Formed by removal of Seats at Row A & B which will reduce 59 seats.

CONCERT MODE (SOUND CANOPY LAYOUT)

STAGE WIDTH

From centre line to SR and SL (down stage)	9.30m
From centre line to SR and SL (up stage)	7.35m
Extension stage	(DS) 19.00m (Removal of 59 seats) (US) 15.00m

STAGE DEPTH

Rear of safety curtain to Choir stalls	6.40m
Choir stalls to forestage edge at centre	8.80m
Choir stalls to forestage edge at SL or SR	8.05m
Choir stalls to extension stage edge	10.70m (Removal of 59 seats)

STAGE HEIGHT

To canopy down stage	9.80m
To canopy up stage	7.20m
Above Auditorium	0.70m

THEATRE MODE (PROSCENIUM LAYOUT)

PROSCENIUM

Structural Opening	12.00 x 5.00-5.60m (W x H)
Adjustable proscenium opening with Teaser	

STAGE WIDTH

From centre line to SR and SL (down stage)	9.30m
From centre line to SR and SL (up stage)	7.35m
Extension stage	19.00m (Removal of 59 seats)

STAGE DEPTH

Rear of safety curtain to Choir stalls	6.40m
Choir stalls to forestage edge at centre	8.80m
Choir stalls to forestage edge at SL or SR	8.05m
Choir stalls to extension stage edge	10.30m (Removal of 59 seats)

STAGE HEIGHT

To grid level	15.85m
To flying bars	14.00m
Under fly galleries	10.80m
Above Auditorium	0.70m

FORESTAGE / ORCHESTRA PIT

ORCHESTRA PIT

Formed by removal of Seats at Row A & B which will reduce 59 seats.	
Dimensions	18.97 x 1.48-1.93 x 1.10m (W x D x H)
Capacity	10 – 15 musicians



Pit setup provision with conductor podium, chairs, stools, music stands, and music lights

EXTENSION STAGE

Seats at Row A & B have to be removed when the extension stage is used.

There will be a reduction of 59 seats.

Dimensions 18.90 x 1.9-2.1 x 0.70m (W x D x H)

CHOIR STALL

Fixed choir stalls behind stage platform, capacity for 60 choir
3.00m deep with front rail 2.85m above stage

STAGE FLOOR

The surface of the stage consists of flat-strip timber planks on concrete, smooth but not waxed or polished. No nails or screws allowed. 500kg/m² SWL

Trap – Not available

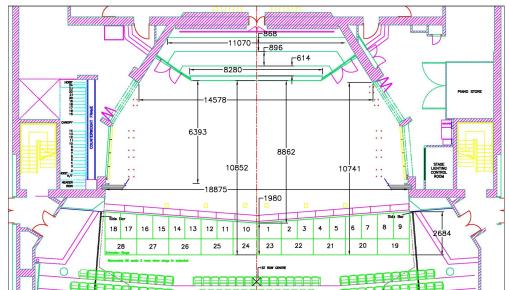
SIDE STAGE

Very limited off platform / stage area

REAR STAGE

Not available

The fire shutter is treated as a safety curtain by FSD and cannot be obstructed by scenery, equipment or stage wagon in production.



STORAGE SPACE

Very limited off stage area

CROSSOVER

Corridor behind stage

RIGGING (For Theatre mode only)

House Curtain (Sliver) manual fly or motor travel

Bar 1, fly in and out manually and draw left and right electrically at varying speed

BP Screen

Bar 24

Stage Lighting Bar

Standard lighting bars

LED Cyclorama lights

Bar 3, 7 and 14

Bar 17

Rigging System

Single purchase counterweights

Counterweight frame located at stage right

Bar length

24

15m (except Bar no. 2, 4-6, 8-13 are 16m
Bar no. 19-24 are 14m long)

Bar diameter

60mm (upper bar)

48mm (lower bar)

Bars distance (generally)

0.20m

Capacity

250kg SWL

Pinrail

None

Side Bars

None

Point Hoists

None

STAGE EQUIPMENT

Stage Drapery

Black masking	leg	2	flat	2.50 x 7.00m	General rig (W x H)
		4	flat	3.50 x 7.00m	General rig



	2	flat	4.50 x 7.00m	General rig
border	1	flat	17.00 x 2.50m	General rig
	2	flat	16.00 x 2.50m	General rig
half tab	2	flat	8.00 x 7.00m	General rig, as mid curtain for general rig
tab	2	fullness	15.00 x 7.00m	General rig
*Tabs installed with 100% fullness with 2 ties to each runner. It can be used as flat or semi-draped clothes by tying directly to bar.				
White Plastic Cyclorama	1	flat	14.00 x 8.00m	General rig
Black gauze	1		14.00 x 7.50m	
White gauze	1		14.00 x 7.50m	
Projection screen (Front / Back)	1		4.00 (W) x 3.00m (H)	On stand or hang on bar (Theatre Mode only)
Orchestra Riser		Wenger Trouper		
Aluminum frame platform. Chair rails and guard rails available. No drilling or painting.				
2.4 x1.2m (W x D)	6		203mm(H)	
	6		407mm(H)	
	6		610mm(H)	
Choir Riser (3 or 4 steps)	Wenger Tourmaster		for approx. 80-90 persons	
Orchestra Chair	120			
Music Stand	70			
Conductor's Podium	1		0.97 x 0.97 x 0.18m (L x W x H)	
(can be combined into 2-steps podium)	1		1.22 x 0.97 x 0.18m (L x W x H)	
Conductor's Stand	1			
High Stool	5		(Share with Theatre)	
Ceremony Chair	12			
Podium	1		0.76 x 0.45 x 1.22m (W x D x H)	
Table	5		1.22 x 0.76 x 0.74m (W x D x H)	
Table Cloth				
Dancing Tile	Black for main stage			
<i>for dance show only</i>	<u>(Please allow time to lay the ties during booking time)</u>			
Stage Carpet	Green	2	5.50 x 5.50m (W x D)	
<i>for Chinese Opera only</i>				
Instruments	Concert Grand Piano	2	Steinway & Sons (incur extra charge)	
	Harpichord	1	William Dowd Boston 1966 (Share with HKCC and incur extra charge)	
	Harp	1	Lyon & Healy Harps (Share with Theatre and incur extra charge)	
	Timpani	1 set of 4	ADAMS PRO GEN 2 (23", 26", 29", 32" Share with Theatre and incur extra charge)	
	Up-right Piano	3	(Located at side-stage, dressing rooms C2 & C5)	
Lift and Ladder				
Cougar lifts (7.00m Height)	1		<i>operated by competent person & prior approved by venue management only</i>	



Counterweights Available as requested

DRESSING ROOM

First floor **C1:** accommodates 15-20 persons
C2: accommodates 5-8 persons
C3: accommodates 3-5 persons

Second floor **C4:** accommodates 15-20 persons
C5: accommodates 5-8 persons
C6: accommodates 3-5 persons

All dressing rooms fitted with private toilet and shower
(C3 with no shower)



RUNNING WARDROBE

Washing machines, dryers, located at dressing room C3
Sewing machines, irons & boards and steamers can be loaned from Stage Management Department

LIGHTING

Dimmer ETC Sensor3 dimmer. Total 149 nos.
3kW 142 nos.
5kW 7 nos.
Locating at back stage corridor.

Control Board ETC Gio, with full backup control facilities, EOS Family OS operating software, located in Lighting Control Room at side stage of Stage Left.

Remote Control ETC – wireless remote control.

Houselight Dimmer controlled. Controlled independently or via lighting control board.

Circuit 120 x 3kW production lighting circuits distributed at various locations throughout the Stage and lighting bridges. Another 22 x 3kW and 2 x 5kW production lighting circuits located in dimmer room at back stage. Terminated to 15A or 32A socket outlets to UK standard on the production lighting boxes.

Additional Power 220/380 Volt; 3-phase/4 wire, 32A/phase and 63A/phase, located in US Left side stage wall c/w and dimmer room.

Connection must be conducted by a local registered electrical worker.

Hirer shall supply adequate circuit protective devices for all bring in electrical installation.

13A wall-mounted socket outlets at UK standard are provided on the stage.

Front of House Position FOH Lighting Bridge no.1, 17.13m throw at 42.65 degree
FOH Lighting Bridge no.1, 15.80m throw at 47.60 degree (Apron)
FOH Lighting Bridge no.2, 19.71m throw at 36.20 degree
FOH Lighting Bridge no.2, 18.13m throw at 39.95 degree (Apron)
Circle Rail, 17.85m throw at 16.97 degree
Circle Rail, 15.94m throw at 19.08 degree (Apron)

Profile	750W	ETC	Source 4 zoom 15/30	2	Canopy Light Bar Left & Right Box Under Bar
	750W	ETC	Source 4 zoom 15/30	4	
Fresnel	1kW	G&E	Par 64 (CP61)	8	Ceiling I & II Circle Front Canopy Light Bar Bar 3, 14 Bar 7
	750W	ETC	Source 4 zoom 15/30	24	
	750W	ETC	Source 4 zoom 15/30	12	
	300W	ETC	Source Four LED Fresnel	6	
	1kW	Selecon	Rama	20	
	1kW	Selecon	Rama	12	



LED Automated Lighting	550W	Robe	T1 Profile	6	Left & Right Box Under Bar
Cyclorama light Ground Row	RGBAL 148W	Chauvet	Ovation CYC 1 FC	7	Top(with yoke)(Bar 17)
	RGBAL 148W	Chauvet	Ovation CYC 1 FC	7	Bottom(without yoke)
Follow Spot	2.5kW	Robert Juliat	HMV	2	At back of auditorium in balcony
Canopy light	750W	Source 4	PARNel	24	Fixed onto canopy and used for concert mode
Work Light (Flood light)	1kW			2	Canopy Light Bar
	500W			6	2 SL, 2SR, 2 FOH
Effects Projection	2kW	Strand	Patt. 252	2	Optical effect moving drive
	Effects (Max. 2)		Fleecy clouds	2	
			Storm clouds	2	
			Smoke	1	
			Water	1	
Smoke generator					As required from pool stock
Strobe Light					As required from pool stock
UV light					As required from pool stock
Colour Scroller		Rainbow	Colour Scroller	14 (for 1kW)	
Other	Side light tower			8	(Pre-rigged and share with Theatre)
Tower equipment setup:		5 (top)	As request		220cm*
		4	750W ETC Source 4 zoom 15/30		180cm*
		3	1kW Selecon Rama Fresnel		135cm*
		2	1kW Strand Cantata Fresnel		90cm*
		1 (bottom)	750W ETC Source 4 zoom 15/30		45cm*

* = Height the equipment from the centre of lens to the floor

Supply of above equipment subject to availability on receipt of a lighting plan.

Equipment availability does vary slightly according to equipment conditions and maintenance. Check with Technical Manager for any updates.

Hirer will be provided with basic lighting only, from available hung equipment, if technical preparation time is less than 2 hours in the booking.

All brought-in “Electrical and Stage Lighting Equipment” to be used in LCSD PA venues, shall meet the requirements of “Code of Practice for Electricity (Wiring) Regulations (2009 Edition)”. Please contact the venue management for any electrical safety concern. Website reference:

http://www.emsd.gov.hk/emsd/eng/welcome/em_safety.shtml

SOUND

Sound System	Main central cluster:			
	d&b Ti10L			8
	Left and right:			
	d&b F-1222			3 (on each)
	d&b B1-SUB			2 (on each)
	d&b Ci-45			1 (on each)
	Balcony left and right:			
	d&b audiotechnik Qi-1			4
	Stage front:			



	d&b E3	4
Main Control Console	Studer Vista V-32 mixing console	
	Mono inputs	32
	Stereo inputs	8
	Aux outputs	12
	Bus outputs	12
	Matrix outputs	8
	Control room at the back of auditorium	
Microphone tie line	At main reflector	6
	At hanging bar	3
	Stage front	12
	Stage left with multi-pair cable	16
	Stage right with multi-pair cable	16
Accessory Electronics (Pre-aligned, not loose equipment)	Lexicon 480L digital effect system	1
	Lexicon PCM 96SUR-D digital effect processor	2
Microphone	B&K 4003 A-B stereo recording microphone system	2
	Crown PCC160	3
	AKG C414B-U LS	4
	Neumann KM183	2
	Neumann KM184	6
	Sennheiser MD421-II	2
	Shure Beta 57	2
	Shure MX412	2
	Shure Beta 58	5
	Shure SM 57	4
	Shure PG 58	4
Wireless Microphone	Sennheiser SKM 5200-II hand-held type	8
	Sennheiser SK 5212-II body-pack type	8
	Max. 8 units with a minimum booking of 2 sessions (incur extra charge)	
Stage Monitor	d&b audiotechnik M6	10
	Meyer Sound UP-JUNIOR	2
CD	Tascam CD-6010 CD player	2
CD Recorder	Tascam SS-CDR250N	2
DVD Recorder (CCTV recording)	JVC SR-HD2700US	2
Multimedia Projector	Christie DHD1075-GS (10,000 ANSI Lumens)	1
	(Control panel at left box of left promenade)	(incur extra charge)
Video Monitor	SWIT S-1093F 9" Full HD Broadcast LCD Monitor	4
Accessory	Direct Boxes	
	Microphone stands	
	Sub snakes	
	Cables and adapters	



COMMUNICATION

Stage manager control panel at stage left
Dual channels production communication systems for stage, lighting and sound
Paging and show relay system
Cue light system
Close Circuit TV system
Production desk can be set at the middle of the stall

**Prior to booking date, please confirm with Technical Manager for the availability of the equipment.
All required equipment will be set-up during the booking sessions; please allow adequate time for equipment set-up before performance or rehearsal**



POOLED LIGHTING EQUIPMENT LIST
for Productions with a Lighting Designer

				<u>Theatre</u>	<u>Concert Hall</u>
Profile	750W	ETC	Source 4 zoom 25/50	4	8
	750W	ETC	Source 4 zoom 15/30	21	30
	1kW	G&E	Par 64 (CP61)	20	12
	300W	ETC	Source Four LED Series 3 Lustr	22	0
Fresnel	2kW	Selecon	Arena Theatre F	3	3
	1kW	Strand	Cantata F	10	10
Pebble Convex	1kW	Strand	Cantata PC	10	10
Effects Lantern Effect (Max. use of 2)	750W	ETC	70° Profile Spot		2
			Fire		2
			Cloud		2
			Spiral (rain)		2
			Radial (water)		2
Music light	25W			35	35
Light stand				8	8
	Floor stand			12	12
Light tower			1.90m height	4	4
Gobo holder		Source 4	A size		54
			B size		24
Iris		Source 4			28
Strobe light		Martin	Atomic 3000 DMX	2	2
UV Light	400W	Wildfire	LT-400F	2	2
Smoke machine		Viper	NT		4
Portable screen			1.80 x 1.80m		1 (On stand)
			2.40 x 2.40m		1 (On stand)

Equipment on this list allocated on a **first come first served** basis on presentation of a complete lighting plan.

Pool equipment cannot be reserved for any pending design.

Prior to booking date, please confirm with Technical Manager for the availability of the equipment. All required equipment will be set-up during the booking sessions; please allow adequate time for equipment set-up before performance or rehearsal



POOLED SOUND EQUIPMENT LIST
for Productions with a Sound Designer

Microphone pool	Neumann KMR-82i shotgun	4
	AKG D112	3
	AKG C411	4
	Shure 565SD	2
	Shure Beta 87	2
	Shure SM94	3
	DPA 2011A	8
	DPA 4099	8

Equipment on this list allocated on a **first come first served** basis on presentation of a complete production audio design.

Pool equipment cannot be reserved for any pending design.

Prior to booking date, please confirm with Technical Manager for the availability of the equipment.
All required equipment will be set-up during the booking sessions; please allow adequate time for equipment set-up before performance or rehearsal